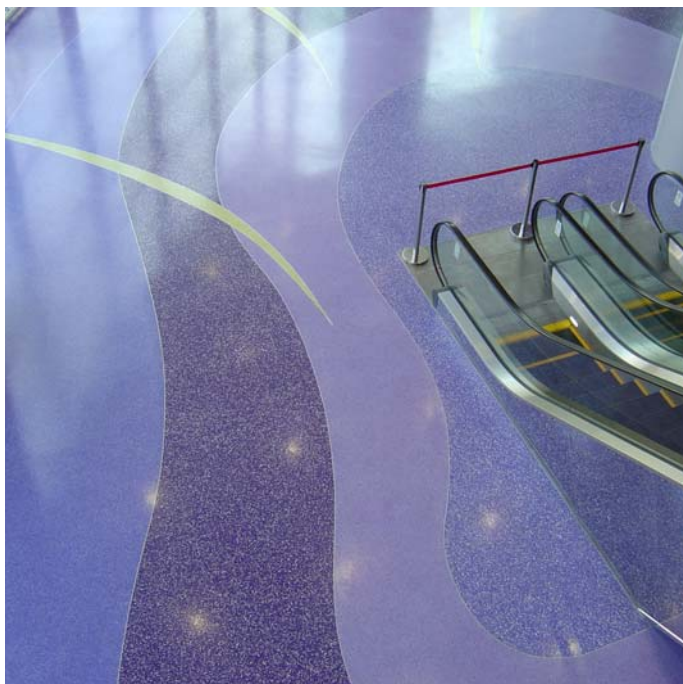


Mondéco Crystal (8 mm)



Description

Mondéco Crystal is a seamless epoxy resin terrazzo floor finish.

Aggregate: Clear crystal glass.

Uses

Mondéco Seamless Terrazzo is suitable for airport and railway terminals, shopping centres, hotels, restaurants, and environments where design, chemical resistance and durability are of paramount concern.

Benefits

- Aesthetically pleasing - enhances the working environment
- Seamless finish (except for underlying slab joints)
- Easy to clean and maintain
- Abrasion resistant
- Highly chemical resistant resin matrix
- 25 year Guarantee

Project References

Henry Moore Art Gallery, Leeds, UK, Planet Hollywood, Cannes, France; Karen Millen, Sweden; Euro Disney; Hanley market; BT Oswestry; Café Grand Prix, London; Sharjah Mega Mall in UAE.

Standard colour chart



Provence



Palm



Rock



Sand



Rosewood



Leaf Green



Foliage



Snow



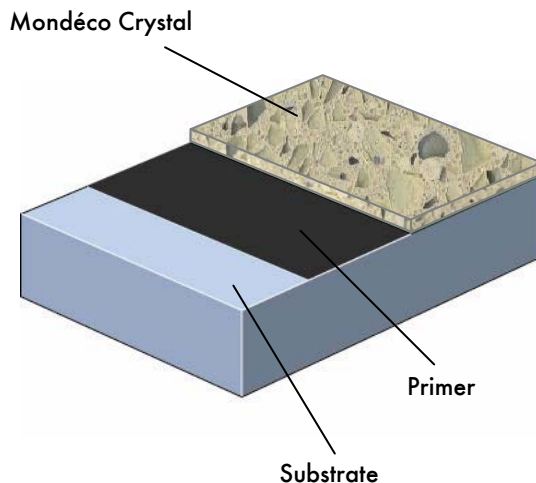
Feather



Rosebud

The applied colours may differ slightly from the examples shown above. Contact our customer services for a true colour sample or a special colour match. Special corporate colours and designs can be produced to special order.

System Design



Model Specification

Product: Mondéco Crystal

Finish: Semi gloss

Thickness: 8mm

Colour: _____

Preparatory work and application in accordance with manufacturers instructions.

Manufacturer: Flowcrete UK Ltd

Telephone: Customer Service - +44 (0) 1270 753000

Substrate Requirements

Concrete or screed substrate should be a minimum of 25 N/mm², free from laitance, dust and other contamination. Substrate should be dry to 75% RH as per BS8204 and free from rising damp and ground water pressure. If no damp proof membrane is present Hydraseal DPM can be incorporated directly beneath the Mondéco system.

Products Included in this System

Primer: Flowprime @ 0.25 kg/m²

Topping: Mondéco Crystal @ 22.5 kg/m²
(Applied at 10 mm, ground down to 8 mm)

Grout: Mondéco Coloured Grout @ 0.1 kg/m²

Sealers: Flowseal PU Gloss (WB) @ 0.03 kg/m² approx.
(dilute 1:1 by weight with clean water before use)

Enhance @ 0.03 litres/m² approx. in total
(applied in 2-3 layers)

Additional layers may be applied to achieve the desired finish.

Detailed application instructions are available upon request.

Installation Service

The installation should be carried out by a Flowcrete approved contractor with a documented quality assurance scheme. Obtain details of our approved contractors by contacting our customer service team or enquiring via our web site www.flowcrete.com

Microbial / Fungal Resistance

At an additional cost, an antimicrobial additive can be incorporated into Mondéco to provide control of most bacteria and fungi which come into contact with the floor.

Focus on the Floorzone

Flowcrete Group plc are world leaders in specialist industrial and commercial flooring. Systems available include: underfloor heating systems, floor screeds, surface damp proof membranes, decorative floor finishes, seamless terrazzo, car park deck waterproofing, corrosion resistant systems... to name just a few.

Our objective is to satisfy your Floorzone needs.

Important Note

Flowcrete's products are guaranteed against defective materials and manufacture and are sold subject to its standard Terms and Conditions of Sale, copies of which can be obtained on request.

Technical Information

The figures that follow are typical properties achieved in laboratory tests at 20°C and at 50% Relative Humidity.

Fire Resistance	BS476:Part 7: Spread of Flame Class 2
Slip Resistance	TRRL Pendulum Slip Test Dry 80
Temperature Resistance	Tolerant of sustained temperatures up to 60°C
Water Permeability	Nil - Karsten test (impermeable)
Chemical Resistance	Go to www.flowcrete.com
Abrasion Resistance BS8204-2	Grade AR2 - Medium duty Industrial and Commercial
Compressive Strength	65 N/mm ² (BS6319)
Flexural Strength	25 N/mm ² (BS6319)
Tensile Strength	13 N/mm ² (BS6319)
Bond Strength	Greater than cohesive strength of 25 N/mm ² concrete. >1.5 MPa.

Complies with BS 8204-6/FeRFA type 8.

Speed of Cure

	10°C	20°C	30°C
Light traffic	24 hrs	16 hrs	10 hrs
Full traffic	72 hrs	48 hrs	36 hrs
Full chemical cure	12 days	7 days	7 days

Aftercare - Cleaning and Maintenance

Clean regularly using a single or double headed rotary scrubber drier in conjunction with a neutral detergent /floor maintainer.

Environmental considerations

The finished system is assessed as non-hazardous to health and the environment. The long service life and seamless surface reduce the need for repairs, maintenance and cleaning. Environmental and health considerations are controlled during manufacture and application of the products by Flowcrete staff and fully trained and experienced contractors.

Life Expectancy

25 years, subject to correct maintenance regime.

Further Information

To ensure you are specifying a fit for purpose flooring for your project please consult our Technical Advisors on the number below or visit our website to register your interest in specifying one of the most durable floors on the market.