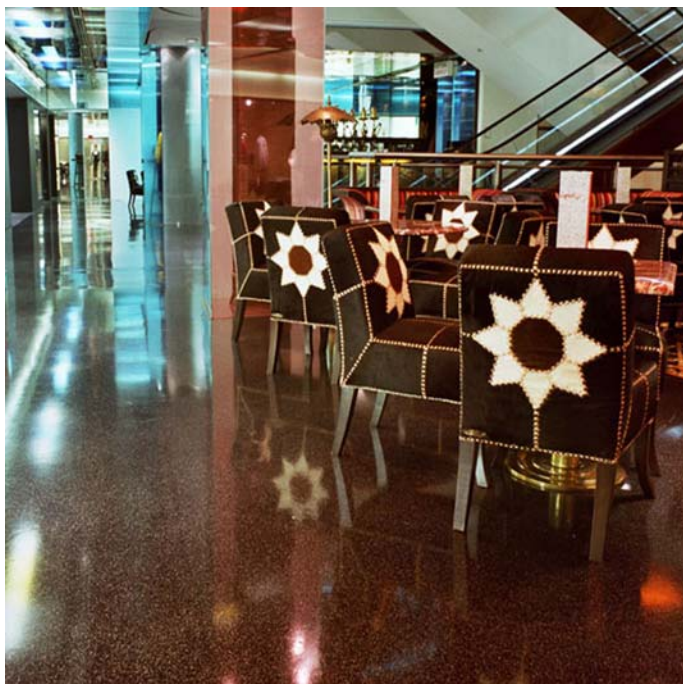


## Kristalina (1.5 mm)



### Description

A decorative smooth sparkling resin floor finish ideal for a modern contemporary environment.

Choose Kristalina for a combination of functionality and shimmering style.

### Uses

Ideal for public areas, shops, department stores, restaurants, garden centres, discos, casinos, trendy bars and cafes, museums and art galleries.

### Benefits:

- Glittering floor finish
- Modern and contemporary
- Seamless hygienic finish
- Easy to clean and maintain
- Hard wearing.
- High scratch resistance
- Environmentally friendly

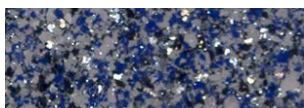
### Project Reference

Selfridges London (June 2003).

### Standard colour chart (with Flowseal EPW colours)



Pacific Blue (uses EPW 453)



Azure Blue (uses EPW 469)



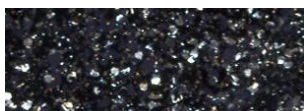
Cranberry (uses EPW 626)



Emerald (uses EPW 756)



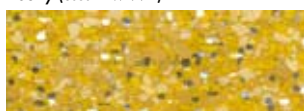
Granite (uses EPW 217)



Ebony (uses EPW 990)



Clementine (uses EPW 640)



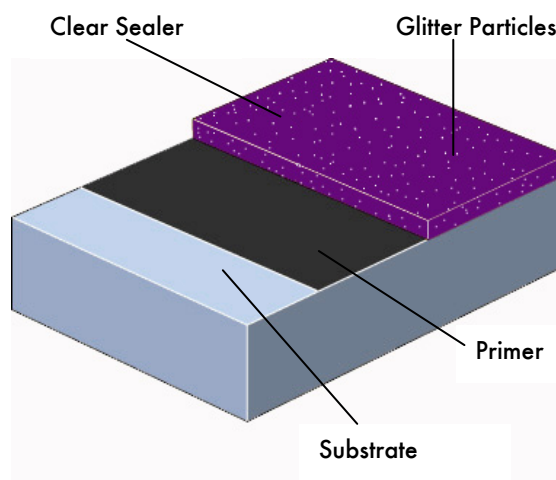
Gold (uses EPW 050)



Peacock (uses EPW 444)

The applied colours may differ slightly from the examples shown above. Contact our customer services for a true colour sample or a special colour match. Special corporate colours and designs can be produced to special order.

### System Design



## Model Specification

Product: Kristalina  
Finish: Gloss or Matt  
Thickness: 1.5 mm (typically)  
Colour: \_\_\_\_\_  
Preparatory work and application in accordance with manufacturers instructions.  
Manufacturer: Flowcrete UK Ltd  
Telephone: Customer Service - +44 (0) 1270 753000

## Substrate Requirements

Concrete or screed substrate should be a minimum of 25N/mm<sup>2</sup>, free from laitance, dust and other contamination. The substrate should be dry to 75% RH as per BS 8204 and free from rising damp and ground water pressure. If no damp proof membrane is present Hydraseal DPM can be incorporated directly beneath the Kristalina system.

## Products Included in this System

Primer : Peran Primer W @ 0.2 kg/m<sup>2</sup>  
Flood Layer : Flowseal EPW @ 0.25 kg/m<sup>2</sup>  
Flakes : Kristal Flakes @ 0.5 kg/m<sup>2</sup>  
Sealer : Kristal Sealer @ 0.3 kg/m<sup>2</sup>  
Sealer : Peran STC @ 0.3 kg/m<sup>2</sup>  
Sealer : Flowseal PU Gloss or Matt @ 0.08 kg/m<sup>2</sup>  
Glass beads can be incorporated to provide better slip resistance.

Detailed application instructions are available upon request.

## Installation Service

The installation should be carried out by a Flowcrete approved contractor with a documented quality assurance scheme. Obtain details of our approved contractors by contacting our customer service team or enquiring via our web site [www.flowcrete.com](http://www.flowcrete.com)

## Environmental considerations

The finished system is assessed as non-hazardous to health and the environment. The long service life and seamless surface reduce the need for repairs, maintenance and cleaning. Environmental and health considerations are controlled during manufacture and application of the products by Flowcrete staff and fully trained and experienced contractors.

## Focus on the Floorzone

Flowcrete Group plc are world leaders in specialist industrial and commercial flooring. Systems available include: underfloor heating systems, floor screeds, surface damp proof membranes, decorative floor finishes, seamless terrazzo, car park deck waterproofing, corrosion resistant systems... to name just a few. Our objective is to satisfy your Floorzone needs.

## System Performance Guide

Complies with BS 8204-6/FeRFA type 4.

## Technical Information

The figures that follow are typical properties achieved in laboratory tests at 20 °C and at 50% Relative Humidity.

Fire Resistance	Class G Certificate No 1721/75 SITAC
Slip Resistance	Method described in BS 7976-2 (typical values for 4-S rubber slider) Dry 56 Wet 23 (with glass beads Wet 40 minimum)
Abrasion Resistance	BS 8204-2 Class AR2 - Medium duty industrial and commercial.
Temperature Resistance	Tolerant of sustained temperatures up to 50°C
Water Permeability	Nil - Karsten test (impermeable)
Vapour Permeability	ASTM E96:90 2.5 g /m <sup>2</sup> / mm/24hrs
Chemical Resistance	Good resistance to tea, coffee, cola, fruit juice, soaps and bleach.
Impact Resistance	ISO 6272 1 kg weight >1.8 m 2 kg weight >1.5 m
Flexural Strength	15 N/mm <sup>2</sup> (BS 6319)
Tensile Strength	10 N/mm <sup>2</sup> (BS 6319)
Bond Strength	Greater than cohesive strength of 25 N/mm <sup>2</sup> concrete. >1.5 MPa.

## Speed of Cure

	10°C	20°C	30°C
Light traffic	24 hrs	12 hrs	6 hrs
Full traffic	72 hrs	48 hrs	24 hrs
Full chemical cure	12 days	7 days	7 days

## Aftercare - Cleaning and Maintenance

Clean regularly using a rotary scrubber in conjunction with a mildly alkaline detergent.

## Life Expectancy

5 - 7 years, subject to correct maintenance regime.

## Important Note

Flowcrete's products are guaranteed against defective materials and manufacture and are sold subject to its standard Terms and Conditions of Sale, copies of which can be obtained on request.

## Further Information

To ensure you are specifying a fit for purpose flooring system for your project please consult our Technical Advisors on the number below or visit our website to register your interest in specifying one of the most durable floors on the market.