

## Deckshield ED Exposed Deck (2 mm)



### Description

Deckshield ED is a BBA approved solvent free polyurethane flexible car park deck coating system which provides a colourful crack bridging, waterproof wearing surface for use over exposed decks of multi-storey car parks.

### Uses

To cosmetically enhance, reduce noise and waterproof multi-storey car parks world wide. Deckshield makes multi-storey car parks lighter, safer environments to visit. Deckshield is suitable for refurbishment of existing car parks and on new construction projects.

### Benefits:

- Aesthetically attractive – brightens up dull, dark, musty car parks
- Reduces noise – stops tyre squeal
- BBA tested and approved
- Hard wearing – abrasion resistant
- Solvent free
- Can be used over existing asphalt substrates
- Fire resistant
- Slip resistant
- Resistant to cracking – flexible waterproof membrane
- Excellent bond strength
- Fast track Installation

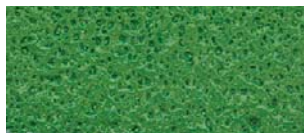
### Project References-

Multi-storey car parks world wide: Kuala Lumpur International Airport; Istanbul Airport; Tsing Yi Car Park, Hong Kong; NCP; Tesco; Marks and Spencer and local authority car parks throughout the UK.

### Standard colour chart



Arabian Yellow



Forest Green



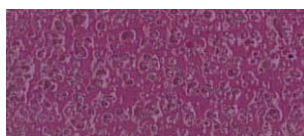
Dark Grey



Tile Red



Mid Grey



Traffic Purple



Traffic Blue

The applied colours may differ slightly from the examples shown above. Contact our customer services for a true colour sample or a special colour match. Special corporate colours and designs can be produced to special order.

## Model Specification

Product: Deckshield ED system.

Finish: Gloss

Thickness: 2 mm

Colour: \_\_\_\_\_

Preparatory work and application in accordance with manufacturers instructions.

Manufacturer: Flowcrete UK Ltd

Telephone: Customer Service - +44 (0)1270 753000

## Substrate Requirements

Concrete or screed substrate should be a minimum of 25 N/mm<sup>2</sup>, free from laitance, dust and other contamination. Substrate should be dry to 75% RH as per BS8204.

## Products Included in this System

Primer: For Refurbishment - Deckshield SF @ 1.0 kg/m<sup>2</sup>  
For New build - Deckshield EP @ 0.5 kg/m<sup>2</sup>

Deckshield Elastomeric Membrane @ 1.0 kg/m<sup>2</sup>

Deckshield SF @ 1.0 kg/m<sup>2</sup> **and** fully blind with  
Deckshield Quartz 0.4 - 0.8 mm @ 2.5 kg/m<sup>2</sup>

Deckshield UV Top Coat @ 0.5 kg/m<sup>2</sup>

Detailed application instructions are available upon request.

## Installation Service

The installation should be carried out by a Deckshield licensed contractor with a documented quality assurance scheme.

Obtain details of our licensed contractors by contacting our customer service team or enquiring via our web site [www.flowcrete.com](http://www.flowcrete.com)

## Environmental considerations

The finished system is assessed as non-hazardous to health and the environment. The long service life and seamless surface reduce the need for repairs, maintenance and cleaning.

Environmental and health considerations are controlled during manufacture and application of the products by Flowcrete staff and fully trained and experienced contractors.

## Focus on the Floorzone

Flowcrete Group plc are world leaders in specialist industrial and commercial flooring. Systems available include: underfloor heating systems, floor screeds, surface damp proof membranes, decorative floor finishes, seamless terrazzo, car park deck waterproofing, tank lining systems... to name just a few.

Our objective is to satisfy your Floorzone needs.

## Technical Information

The figures that follow are typical properties achieved in laboratory tests at 20°C and at 50% Relative Humidity.

Fire Resistance	BS 476-3: Designated EXT.F.AA
Slip Resistance	TRRL Pendulum Slip Test Dry 92 Wet 46
Temperature Resistance	Softens over 70°C, hardens on cooling
Water Permeability	Nil - Karsten test (Impermeable)
Chemical Resistance	Go to <a href="http://www.flowcrete.com">www.flowcrete.com</a> Resistant to petrol, diesel, antifreeze, hydraulic fluid, chlorides and battery acids.
Resistance to chloride ions	DOT BD47/94: Appendix B, Method B4,2(d). Result: No chloride ion penetration after 28 days
Abrasion Resistance	Taber Abrader: 40 mg loss per 1000 cycles (1 kg Load using H-22 wheels)
Tensile / Elongation N/mm <sup>2</sup> /%	BS 2782:Part 3 Method 320A All samples heat aged at 70°C 1 day 5.4/50.4 7 day 7.15/40.2 28 day 7.17/30.5
Low Temperature Flexibility	MOAT 27: Method 5.4.2 No failure of membrane layer at -20°C
Tear Strength	MOAT 27 Method 5.4.1 Test Result = 192 N
Bond Strength	Greater than cohesive strength of 25 N/mm <sup>2</sup> concrete. >1.5 MPa.

## Speed of Cure

	10°C	20°C	30°C
Light traffic	30 hrs	16 hrs	10 hrs
Full traffic	36 hrs	24 hrs	16 hrs
Full chemical cure	12 days	7 days	5 days

## Aftercare Cleaning and Maintenance

Clean regularly using a single or double headed rotary scrubber drier in conjunction with a mildly alkaline detergent.

## Life Expectancy

10 - 15 years - subject to correct maintenance regime.

## Important Note

Flowcrete's products are guaranteed against defective materials and manufacture and are sold subject to its standard Terms and Conditions of Sale, copies of which can be obtained on request.

## Further Information

To ensure you are specifying a fit for purpose flooring for your project please consult our Technical Advisors on the number below or visit our website to register your interest in specifying one of the most durable floors on the market.